



EMBOSSSED IN REGISTER

EIR IMPREGNATION

The **Embossed in Register (EIR)** technology has been used to create a unique material which is confusingly similar to real wood. The surface structure perfectly mimics the grain of real wood. You can see and feel it down to the smallest detail.

So that a pressed structure perfectly fits the printed image, the press plate and decor must be precisely coordinated with each other. The paper growth plays a crucial role during impregnation.

Close cooperation between our in-house decor development, printing and impregnation together with the press plate manufacturer enables top-notch results at the customer's premises.

impress Austria offers special impregnation for **EIR** decors enabling perfect alignment of pattern and texture after short cycle pressing.



DECORS BY IMPRESS. MADE TO IMPRESS.

WWW.IMPRESS.BIZ | AUSTRIA@IMPRESS.BIZ

impress
THE DECOR COMPANY

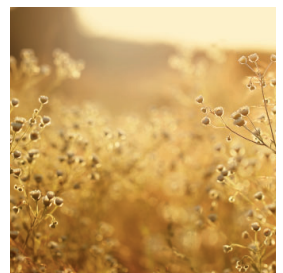
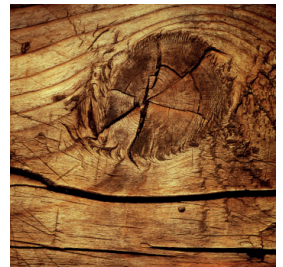


EMBOSSED IN REGISTER

EIR IMPREGNATION

Your benefits:

- one-stop supplier
- in-house decor development, printing and impregnation
- state of the art equipment
- more than 40 years of impregnation experience
- individual solutions



DECORS BY IMPRESS. MADE TO IMPRESS.

WWW.IMPRESS.BIZ | AUSTRIA@IMPRESS.BIZ

impress
THE DECOR COMPANY